

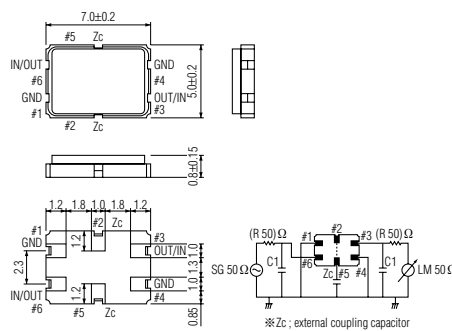
### STANDARD SPECIFICATIONS

Part number	Nominal Frequency fo	Oscillation Mode	Passband min.		Stopband max.		Attention Guaranteed min.		Ripple max.	Loss max.	Terminating Impedance	Operating Temperature	No. of Pole
	(MHz)		(dB)	(kHz)	(dB)	(kHz)	(dB)	(kHz)					
96SMF442A14-4P	44.25	FUND	4	±6.80	22	±12.0	70	-910	1.0	3.0	430//6.0	-30 to +80	4
96SMF450A7.5-4P	45.00	FUND	3	±3.75	30	±12.5	80	-910	1.0	4.0	350//6.5	-30 to +80	4
96SMF450A20-4P	45.00	FUND	3	±10.0	25	±25.0	80	-910	1.0	3.0	500//2.5	-30 to +80	4
96SMF450A30-4P	45.00	FUND	3	±15.0	30	±50.0	80	-910	1.0	3.0	1000//1.0	-30 to +80	4
96SMF4505A15-4P	45.05	FUND	3	±7.50	35	±25.0	80	-910	1.0	3.0	650//3.0	-30 to +80	4
96SMF451A15-4P	45.10	FUND	3	±7.50	35	±25.0	80	-910	1.0	3.0	650//2.2	-30 to +80	4
96SMF453A7.5-4P	45.30	FUND	3	±3.75	30	±12.5	80	-910	1.0	4.0	350//6.5	-30 to +80	4
96SMF472A15-4P	47.25	FUND	3	±7.50	35	±27.0	70	-910	1.0	3.0	800//1.7	-30 to +80	4
96SMF499A11-4P	49.95	FUND	3	±5.35	40	±20.0	80	-910	1.0	4.0	680//3.2	-30 to +80	4
96SMF508A11-4P	50.85	FUND	3	±5.50	20	±12.5	80	-910	1.0	4.0	600//2.5	-30 to +80	4
96SMF7005A20-4P	70.05	3rd	3	±10.0	20	±25.0	70	-910	1.0	4.0	2500// -1.0	-30 to +80	4
96SMF733A13-4P	73.35	3rd	3	±6.50	30	±20.0	70	-910	1.0	4.0	1700// -0.6	-30 to +80	4

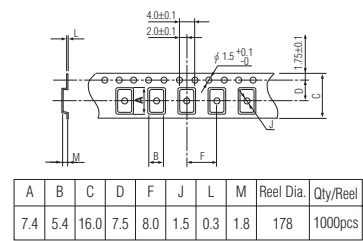
### PACKAGE DATA

Item	Package	96SMF
Lid	Metal	Metal
Base	Ceramic	Ceramic
Sealing	Seam	Seam
Terminal	Tungsten (metalized)	Tungsten (metalized)
Terminal plating	Gold / Nickel (surface/under)	Gold / Nickel (surface/under)
RoHS	Compliant (Pb-free)	Compliant (Pb-free)

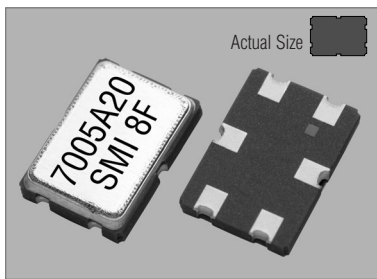
### 96SMF



### TAPE SPECIFICATIONS



### 96SMF



### SOLDERING PATTERN

